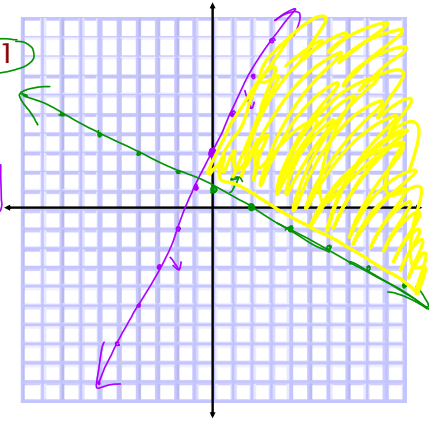


Graphing Systems of Linear Inequalities- Notes

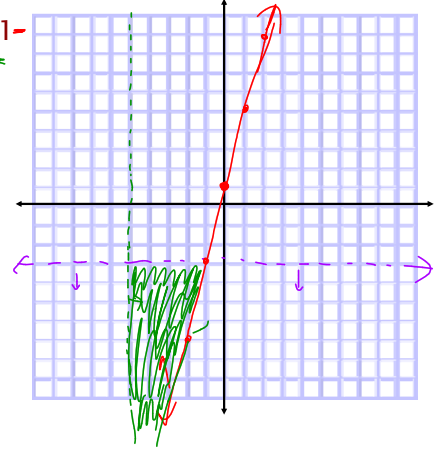
Solve each system of inequalities by graphing.

1.  $2x - y \geq -3$   
 $y \geq -\frac{1}{2}x + 1$

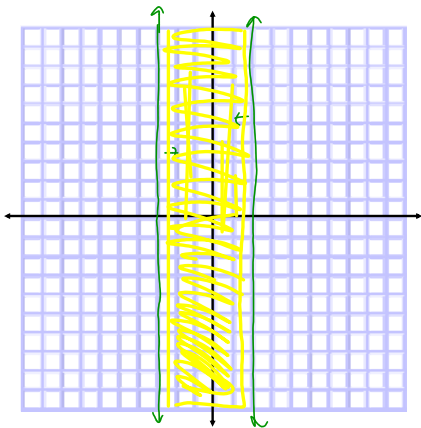
$-y \geq -2x - 3$   
 $y \leq 2x + 3$



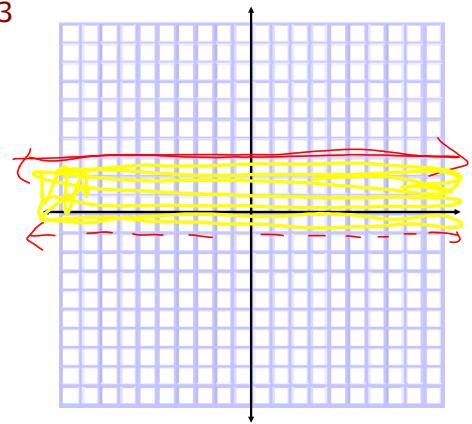
2.  $y < -3$   
 $y \geq 4x + 1$   
 $x > -5$



3.  $-3 \leq x \leq 2$



4.  $-1 < y \leq 3$



5.  $-6 < x+y \leq 4$

$-x-6 < y \leq -x+4$

$y > -x-6$

$y \leq -x+4$

